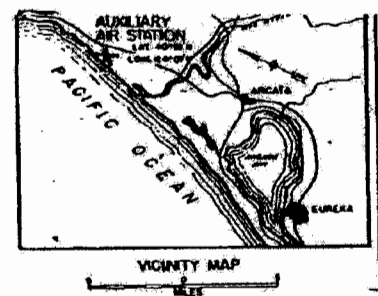
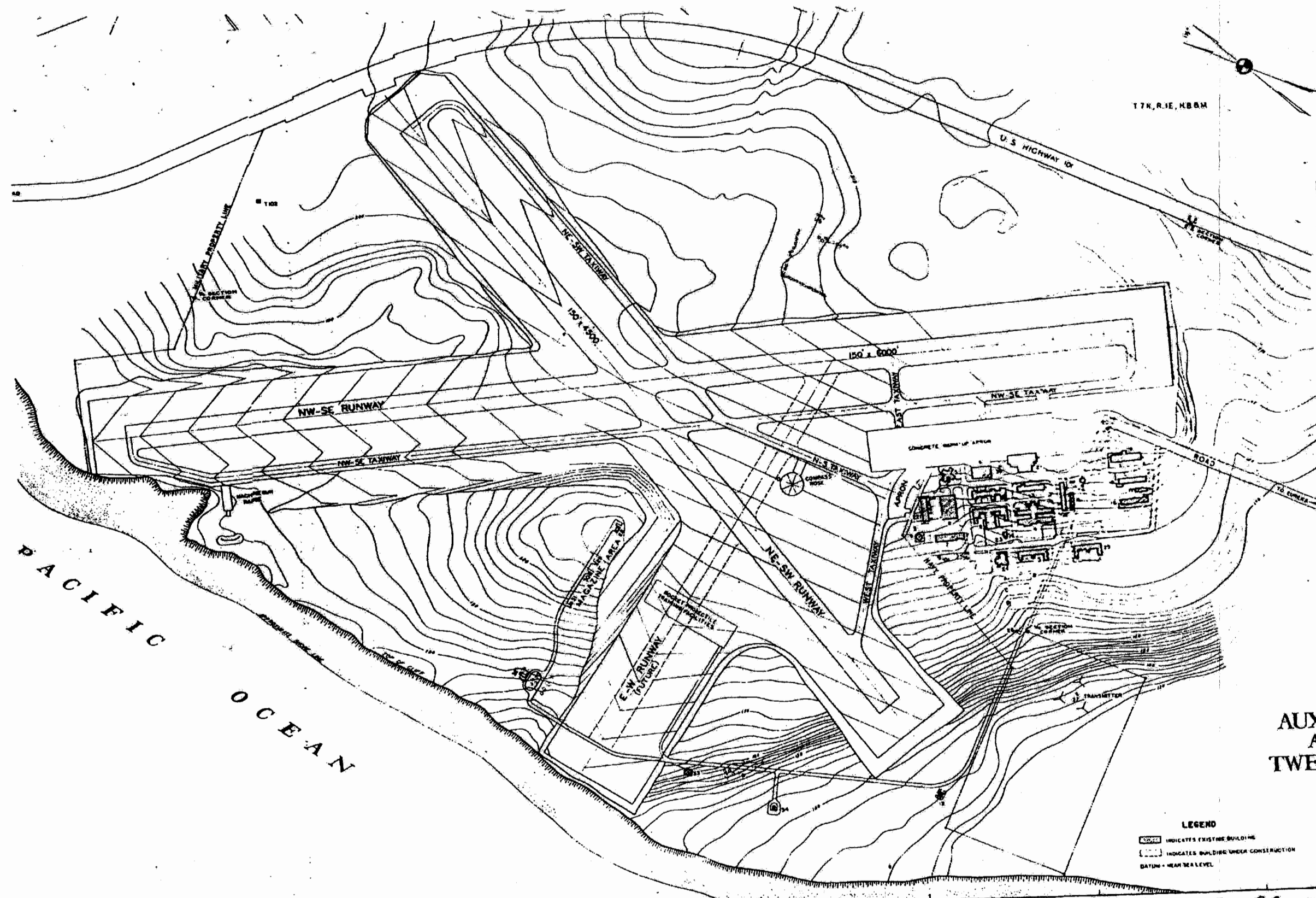


SKETCH SHOWING TARGET LAYOUT

1	16 Apr 44	Target Added	CHS
Revision	Date	By	
Drawn by	NAVAL AIR STATION ALAMEDA, CALIFORNIA		
Traced by	PROPERTY ACQUISITION MAP BIG LAGOON BOMBING TARGET NEAR ARCATA, CALIF.		
Checked by	Approved: 20 April 1944		
Chief of map BCR			
In Charge			
P. W. Drawing No.	963		
	Public Works Officer		

BT. No. 12

COPY FROM:



**LIST OF BUILDINGS**

NO.	SYMBOL	NAME	TYPE	DATE
1	[Symbol]	ADMINISTRATION BUILDING	C-2	1945
2	[Symbol]	WELFARE AND HEALTH	C-2	1945
3	[Symbol]	ARCHIVES OFFICE BUILDING	C-2	1945
4	[Symbol]	POST OFFICE BUILDING	C-2	1945
5	[Symbol]	POSTAL TELEGRAPH OFFICE	C-2	1945
6	[Symbol]	ENGINE HOUSE	C-2	1945
7	[Symbol]	PERSONNEL OFFICE BUILDING	C-2	1945
8	[Symbol]	STATION HOUSE	C-2	1945
9	[Symbol]	STATION HOUSE	C-2	1945
10	[Symbol]	STATION HOUSE	C-2	1945
11	[Symbol]	STATION HOUSE	C-2	1945
12	[Symbol]	STATION HOUSE	C-2	1945
13	[Symbol]	STATION HOUSE	C-2	1945
14	[Symbol]	STATION HOUSE	C-2	1945
15	[Symbol]	STATION HOUSE	C-2	1945
16	[Symbol]	STATION HOUSE	C-2	1945
17	[Symbol]	STATION HOUSE	C-2	1945
18	[Symbol]	STATION HOUSE	C-2	1945
19	[Symbol]	STATION HOUSE	C-2	1945
20	[Symbol]	STATION HOUSE	C-2	1945
21	[Symbol]	STATION HOUSE	C-2	1945
22	[Symbol]	STATION HOUSE	C-2	1945
23	[Symbol]	STATION HOUSE	C-2	1945
24	[Symbol]	STATION HOUSE	C-2	1945
25	[Symbol]	STATION HOUSE	C-2	1945
26	[Symbol]	STATION HOUSE	C-2	1945
27	[Symbol]	STATION HOUSE	C-2	1945
28	[Symbol]	STATION HOUSE	C-2	1945
29	[Symbol]	STATION HOUSE	C-2	1945
30	[Symbol]	STATION HOUSE	C-2	1945
31	[Symbol]	STATION HOUSE	C-2	1945
32	[Symbol]	STATION HOUSE	C-2	1945
33	[Symbol]	STATION HOUSE	C-2	1945
34	[Symbol]	STATION HOUSE	C-2	1945
35	[Symbol]	STATION HOUSE	C-2	1945
36	[Symbol]	STATION HOUSE	C-2	1945
37	[Symbol]	STATION HOUSE	C-2	1945
38	[Symbol]	STATION HOUSE	C-2	1945
39	[Symbol]	STATION HOUSE	C-2	1945
40	[Symbol]	STATION HOUSE	C-2	1945
41	[Symbol]	STATION HOUSE	C-2	1945
42	[Symbol]	STATION HOUSE	C-2	1945
43	[Symbol]	STATION HOUSE	C-2	1945
44	[Symbol]	STATION HOUSE	C-2	1945
45	[Symbol]	STATION HOUSE	C-2	1945
46	[Symbol]	STATION HOUSE	C-2	1945
47	[Symbol]	STATION HOUSE	C-2	1945
48	[Symbol]	STATION HOUSE	C-2	1945
49	[Symbol]	STATION HOUSE	C-2	1945
50	[Symbol]	STATION HOUSE	C-2	1945
51	[Symbol]	STATION HOUSE	C-2	1945
52	[Symbol]	STATION HOUSE	C-2	1945
53	[Symbol]	STATION HOUSE	C-2	1945
54	[Symbol]	STATION HOUSE	C-2	1945
55	[Symbol]	STATION HOUSE	C-2	1945
56	[Symbol]	STATION HOUSE	C-2	1945
57	[Symbol]	STATION HOUSE	C-2	1945
58	[Symbol]	STATION HOUSE	C-2	1945
59	[Symbol]	STATION HOUSE	C-2	1945
60	[Symbol]	STATION HOUSE	C-2	1945
61	[Symbol]	STATION HOUSE	C-2	1945
62	[Symbol]	STATION HOUSE	C-2	1945
63	[Symbol]	STATION HOUSE	C-2	1945
64	[Symbol]	STATION HOUSE	C-2	1945
65	[Symbol]	STATION HOUSE	C-2	1945
66	[Symbol]	STATION HOUSE	C-2	1945
67	[Symbol]	STATION HOUSE	C-2	1945
68	[Symbol]	STATION HOUSE	C-2	1945
69	[Symbol]	STATION HOUSE	C-2	1945
70	[Symbol]	STATION HOUSE	C-2	1945
71	[Symbol]	STATION HOUSE	C-2	1945
72	[Symbol]	STATION HOUSE	C-2	1945
73	[Symbol]	STATION HOUSE	C-2	1945
74	[Symbol]	STATION HOUSE	C-2	1945
75	[Symbol]	STATION HOUSE	C-2	1945
76	[Symbol]	STATION HOUSE	C-2	1945
77	[Symbol]	STATION HOUSE	C-2	1945
78	[Symbol]	STATION HOUSE	C-2	1945
79	[Symbol]	STATION HOUSE	C-2	1945
80	[Symbol]	STATION HOUSE	C-2	1945
81	[Symbol]	STATION HOUSE	C-2	1945
82	[Symbol]	STATION HOUSE	C-2	1945
83	[Symbol]	STATION HOUSE	C-2	1945
84	[Symbol]	STATION HOUSE	C-2	1945
85	[Symbol]	STATION HOUSE	C-2	1945
86	[Symbol]	STATION HOUSE	C-2	1945
87	[Symbol]	STATION HOUSE	C-2	1945
88	[Symbol]	STATION HOUSE	C-2	1945
89	[Symbol]	STATION HOUSE	C-2	1945
90	[Symbol]	STATION HOUSE	C-2	1945
91	[Symbol]	STATION HOUSE	C-2	1945
92	[Symbol]	STATION HOUSE	C-2	1945
93	[Symbol]	STATION HOUSE	C-2	1945
94	[Symbol]	STATION HOUSE	C-2	1945
95	[Symbol]	STATION HOUSE	C-2	1945
96	[Symbol]	STATION HOUSE	C-2	1945
97	[Symbol]	STATION HOUSE	C-2	1945
98	[Symbol]	STATION HOUSE	C-2	1945
99	[Symbol]	STATION HOUSE	C-2	1945
100	[Symbol]	STATION HOUSE	C-2	1945

427,354  
 MAP OF  
 AUXILIARY AIR STATION  
 ARCATA, CALIFORNIA  
 TWELFTH NAVAL DISTRICT  
 SHOWING CONDITIONS ON  
 JUNE 30, 1945

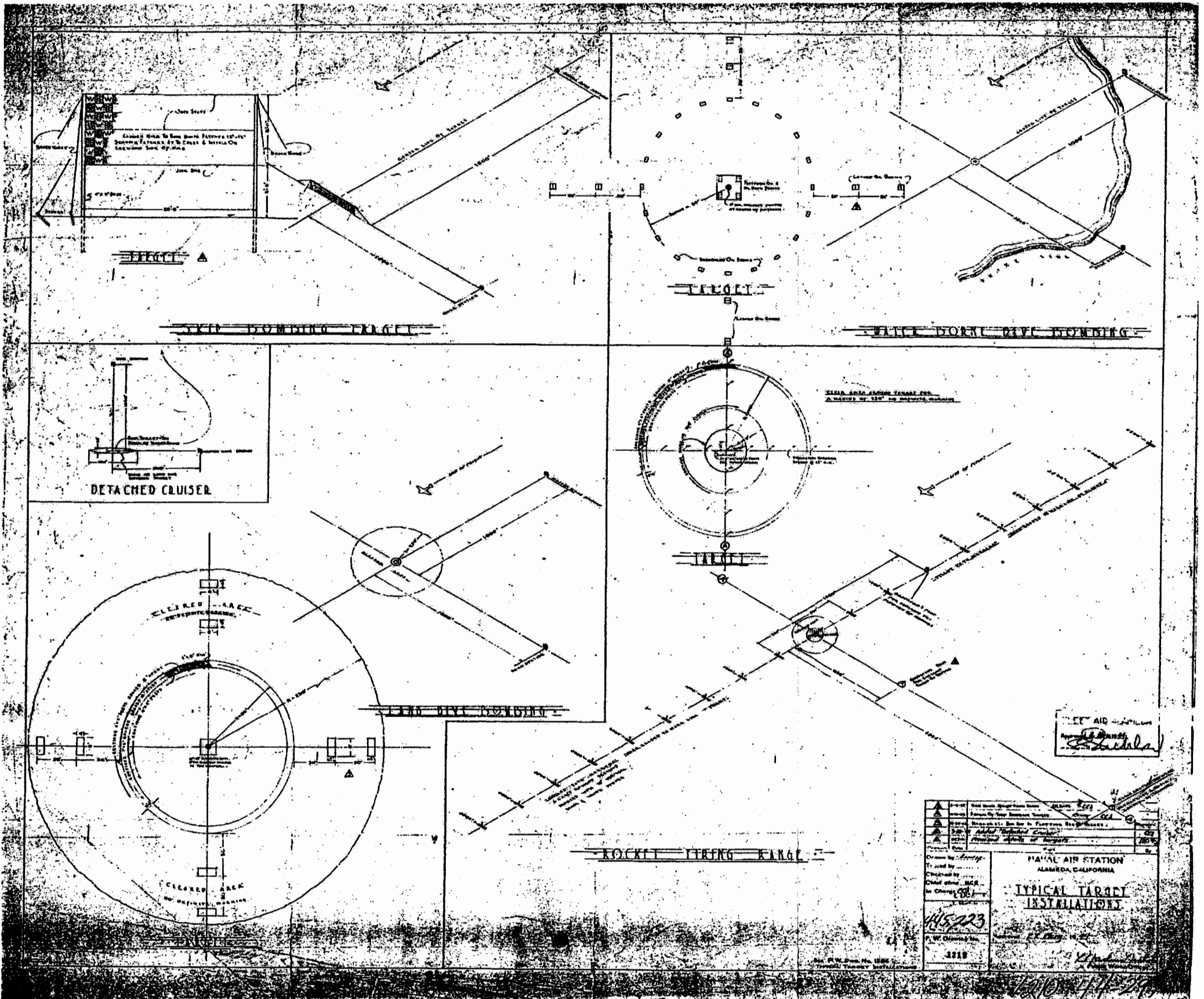
LEGEND  
 [Symbol] INDICATES EXISTING BUILDING  
 [Symbol] INDICATES BUILDING UNDER CONSTRUCTION  
 DATUM - MEAN SEA LEVEL

SCALE OF FEET  
 0 100 200 300 400 500

CAPTAIN (JG) U.S. NAVY  
 DISTRICT PUBLIC WORKS OFFICER

DC-18001

12 10-2-92 (RESTRICTED TO OFFICIAL USE ONLY)



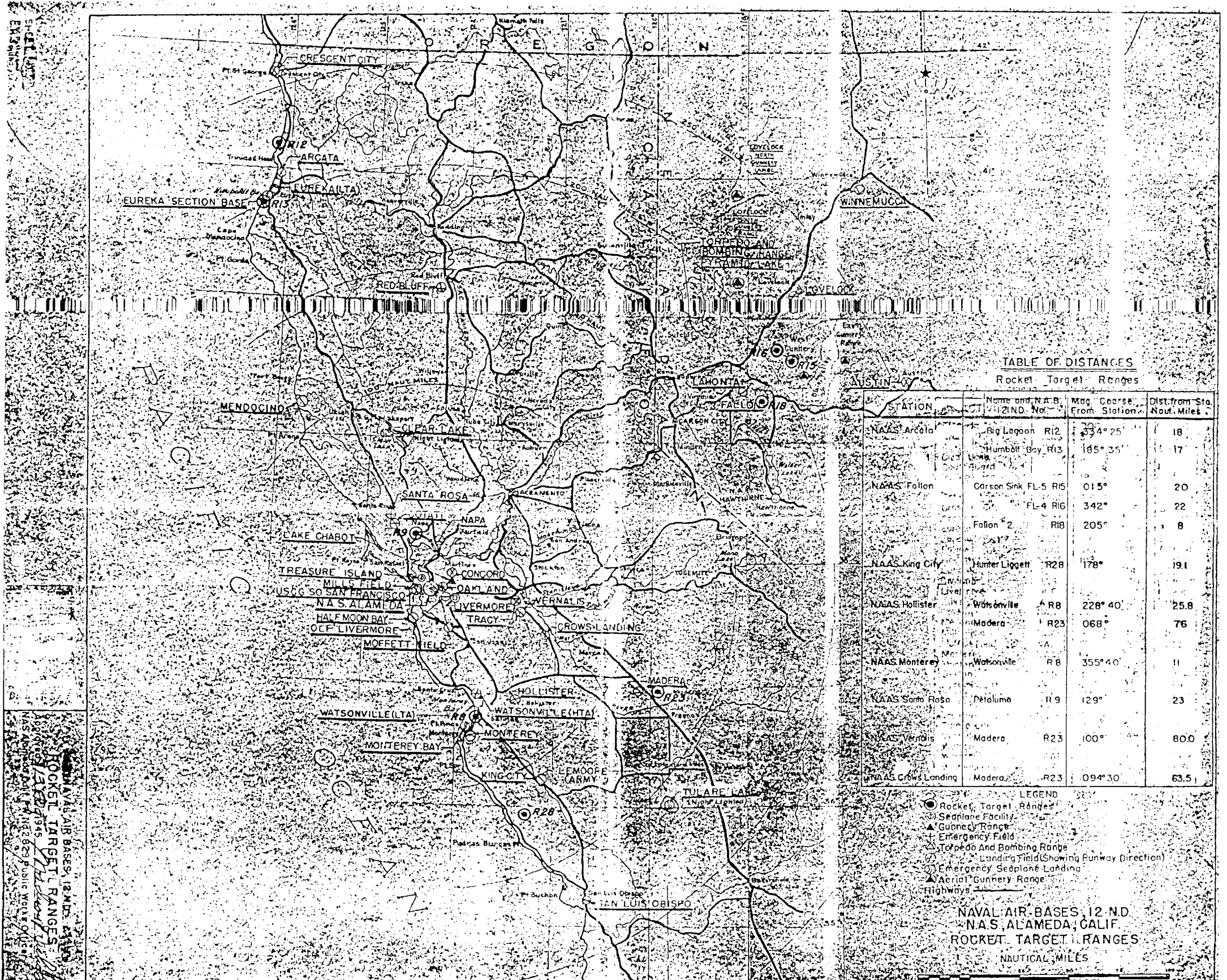


TABLE OF DISTANCES

Rocket Target Ranges

STATION	Name and N.A.S. (LIND. No.)	Mag. Course From Station	Dist. from Sta. Naut. Miles
NAAS Arcata	Big Lagoon R12	334° 25'	18
	Humboldt Bay R13	185° 35'	17
NAAS Fallon	Carson Sink FL-5 R15	015°	20
	FL-4 R16	342°	22
Fallon 2	R18	205°	8
NAAS King City	Hunter Liggett R28	178°	19.1
NAAS Hollister	Watsonville R8	228° 40'	25.8
	Madera R23	068°	76
NAAS Monterey	Watsonville R8	355° 40'	11
NAAS Santa Rosa	Petaluma R19	129°	23
NAAS Vernalis	Madera R23	100°	80.0
NAAS Crow's Landing	Madera R23	094° 30'	63.5

LEGEND

- Rocket Target Ranges
- Seaplane Facility
- ▲ Gunery Range
- ⊕ Emergency Field
- ⊙ Torpedo and Bombing Range
- Landing Field (Showing Runway Direction)
- Emergency Seaplane Landing
- ▲ Aerial Gunery Range
- Highways

NAVAL AIR BASES, 12. ND  
 N.A.S. ALAMEDA, CALIF.  
 ROCKET TARGET RANGES  
 NAUTICAL MILES

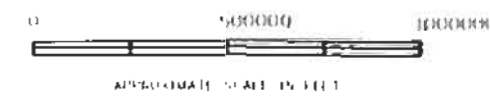
SHEET 12  
 EM 2000  
 NAVAL AIR BASES, 12. ND  
 ROCKET TARGET RANGES  
 1:50,000  
 13 FEB 1965  
 NAS Alameda, Calif. FWS 2629 Public Works Office

--- 12TH NAVAL DISTRICT BOUNDARY  
 - - - - STATE BOUNDARY

NOTE: TARGET LOCATIONS BASED ON LATITUDES AND LONGITUDES TAKEN FROM HISTORICAL LISTING;  
 GUNNERY RANGE BOUNDARIES ARE APPROXIMATE

BAKER/BRAVO		NAME	LATITUDE	LONGITUDE	TYPE	FUDS SITE NUMBER
1940'S NUMBER	1950'S NUMBER					
1	1	TOMALES BAY	38°12'	122°56'	D	J09CA7292
2	2	ABBOTT'S LAGOON	38°07'	122°57'	D	J09CA7292
3		SAN MATEO BRIDGE	37°41'	122°17'	D	N/A WATER TARGET
3A		SKIP BOMBING	37°39'	122°15'	SK	N/A WATER TARGET
4		DD HULK	37°33'	122°09'	D	N/A WATER TARGET
5		HOLLISTER	36°52'	121°21'	O	J09CA1113
6		VERNALIS	37°34'	121°23'	O	J09CA7473
7		CROWS LANDING	37°26'	121°10'	D	J09CA1074
8		WATSONVILLE	36°44'	121°48'	D-R-X	J09CA0781
8A		WATSONVILLE	36°50'30"	121°49'30"	RA	N/A WATER TARGET
9	5	PETALUMA	38°11'	122°33'	D	J09CA7298
10	6	ANTIOCH	38°02'30"	121°37'	D	J09CA7299
11		CARSON SINK	39°41'	118°34'20"	D	J09NV1130
12		BIG LAGOON	41°11'	124°07'	X	J09CA0064
13		HUMBOLDT BAY	40°43'	124°15'	R-X	J09CA7471
14		PYRAMID LAKE	39°51'20"	119°26'	O-M	J09NV1118
15		CARSON SINK A	39°38'	118°31'30"	D-R-X	J09NV1130
16		CARSON SINK B	39°45'20"	118°42'20"	D-R-X	J09NV1130
17	17	BERMOND (NO. 1)	39°15'	118°17'	D-M	ACTIVE DOD INSTALLATION
18	18	FALLON A (NO. 2)	39°19'	118°49'	R-X-D-SK	ACTIVE DOD INSTALLATION
19	19	FALLON B (NO. 3)	39°09'	118°41'	X-D-SK	ACTIVE DOD INSTALLATION
20		SCHURZ (NO. 4)	38°59'	118°38'	D	NONE IDENTIFIED
21		ARCATA	41°05'	124°06'	D	J09CA7297
22		GUSTINE	37°15'	121°06'	RA	J09CA7287
23		MADERA	36°59'	119°52'30"	R-D-RA-SK	J09CA1050
24		TULARE LAKE	35°59'	119°50'	RA	-----
25		LOVELOCK 1	40°17'	117°56'30"	D	J09NV1117
26		LOVELOCK 2	40°26'34"	118°39'15"	D	J09NV1120
27		LOVELOCK 3	40°35'30"	118°24'	D	J09NV1121
28		HUNTER LIGGETT	35°55'	121°13'	R-D	ACTIVE DOD INSTALLATION
29		JENNER	38°26'	123°07'	D	J09CA1039
30		STEWART'S POINT	38°46'	123°31'	D	J09CA1032
20		LONE ROCK	39°52'39"	118°20'39"	RA	ACTIVE DOD INSTALLATION
7		FARALLON	37°49'15"	123°12'45"	RA	N/A WATER TARGET
4		CROW'S LANDING A	37°23'	121°24'	D-R	J09CA7474
3		CROW'S LANDING B	37°24'	121°20'	D-R	J09CA7474

USE LEGEND  
 D-DIVE BOMBING  
 SK-SKIP BOMBING  
 R-ROCKET  
 RA-RADAR  
 M-MOBILE  
 X-RAKE STATIONS

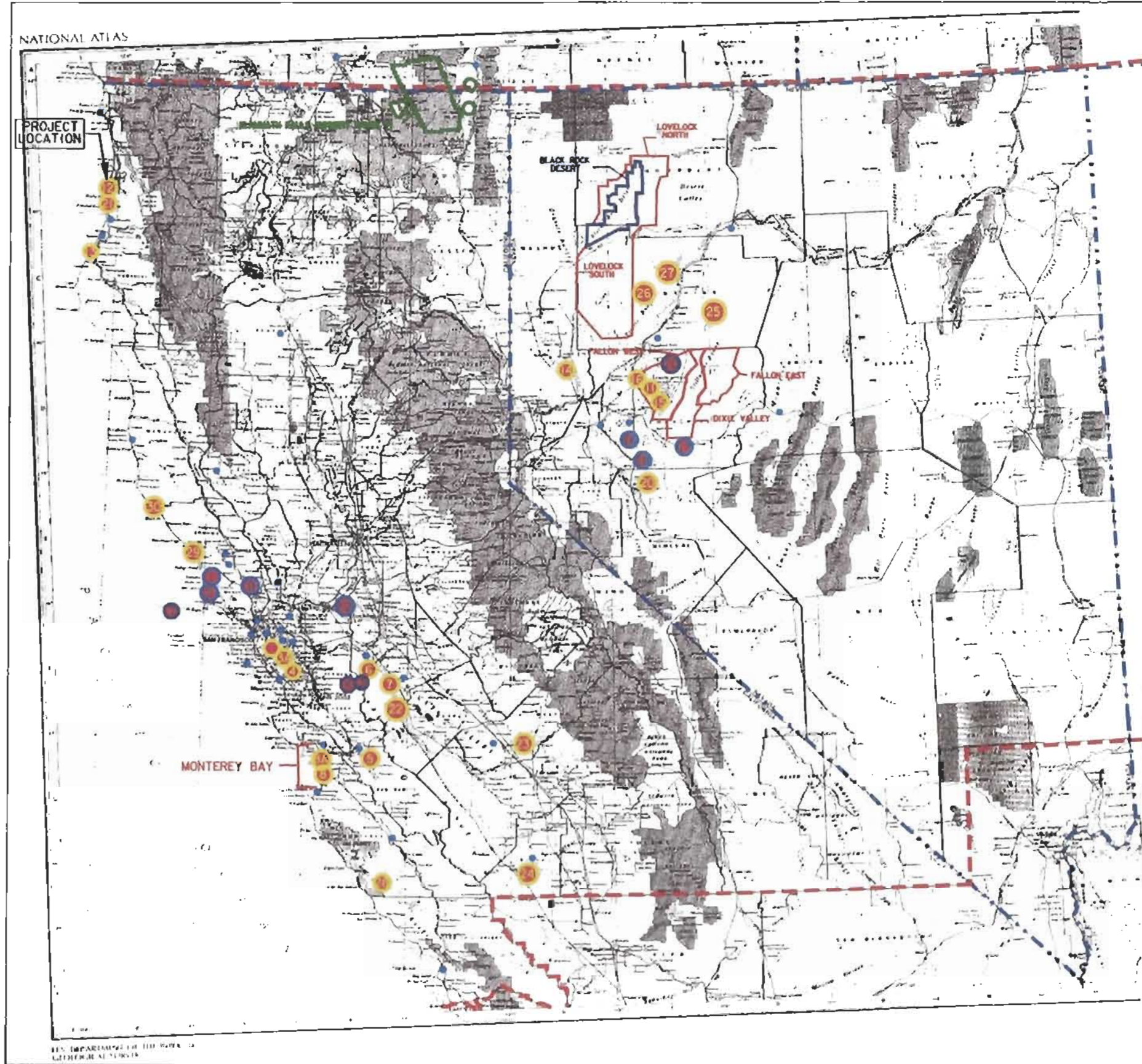


U.S. ARMY CORPS OF ENGINEERS  
ST. LOUIS DISTRICT

**BIG LAGOON 12TH NAVAL DISTRICT  
TARGET NO. 12  
HUMBOLDT COUNTY  
12TH NAVAL DISTRICT BOMBING AND  
GUNNERY AREAS-1940'S TO EARLY 1950'S  
DERP-FUDS\* J09CA006401**

DATE	DATE OF MAP	PLATE NO. <b>1</b>
------	-------------	--------------------

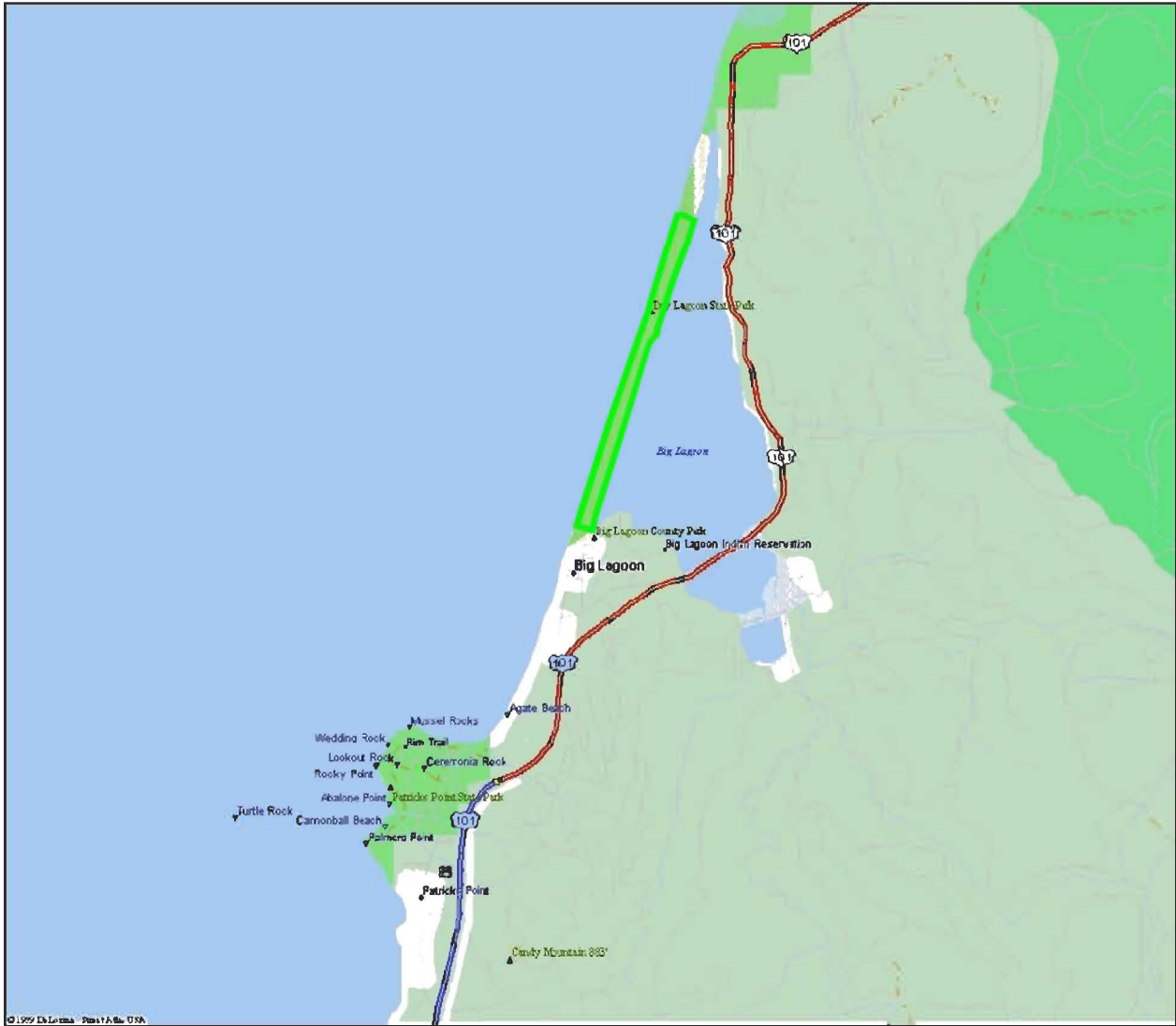
● NAVAL AIR FACILITY (e.g. NAS, NAAS, OLF, etc.)    ● 1950'S ERA TARGET    □ WWII GUNNERY RANGE    □ 1950'S GUNNERY RANGE    □ 13TH NAVAL DISTRICT TARGETS, RANGES & AIRFIELDS  
 ● WWII ERA TARGET    ● BOTH WWII & 1950'S TARGET (WWII ERA \* LISTED IF DIFFERENT)



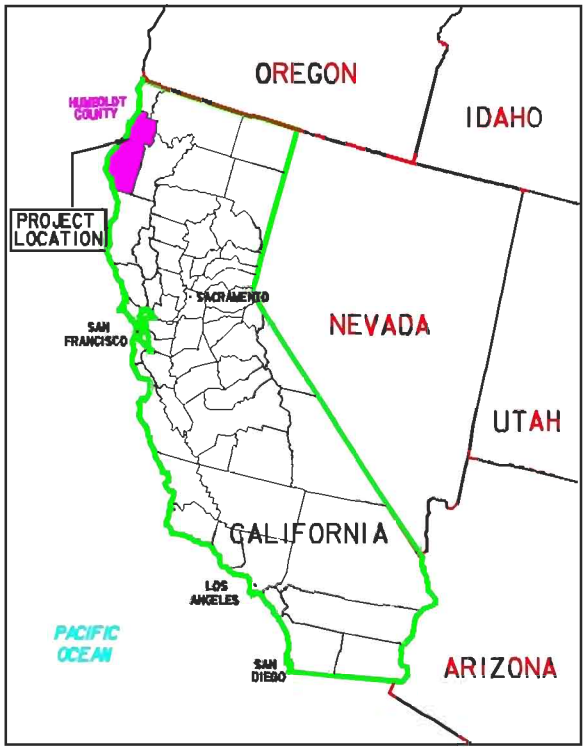
NATIONAL ATLAS

PROJECT LOCATION

U.S. DEPARTMENT OF THE ARMY  
 GEOGRAPHIC SERVICE




© 1999 Esri/Trimble - Part 17A, No. 018



**LEGEND**

BIG LAGOON 12TH NAVAL DISTRICT TARGET NO. 12



	U.S. ARMY CORPS OF ENGINEERS ST. LOUIS DISTRICT
<b>BIG LAGOON 12TH NAVAL DISTRICT TARGET NO. 12 HUMBOLDT COUNTY, CALIFORNIA DERP-FUDS* J09CA006401 VICINITY MAP</b>	
PRJ. DATE: 8000	DATE OF MAP: 1996
0:\40N\2001\0317	1:\proj\cems\2001\0317\big_lagoon\MAP_PLATE_12.DGN
PLATE NO. 2	