

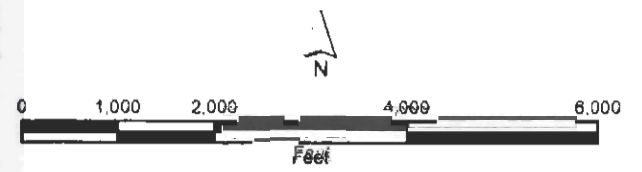
USGS 7.5 Minute Quads: Trinidad, Crannell, and Rodgers Peak, CA

Big Lagoon Bombing Target Range

Formerly Used Defense Sites (FUDS)
Site No. J09CA0064

July 2004

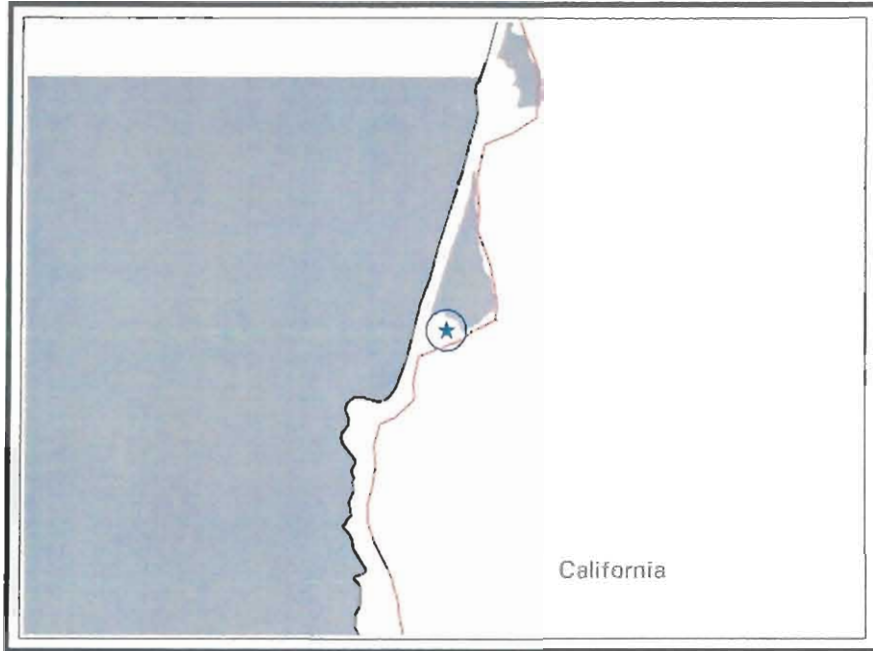
 Site Area



Aerial photo taken June 1993



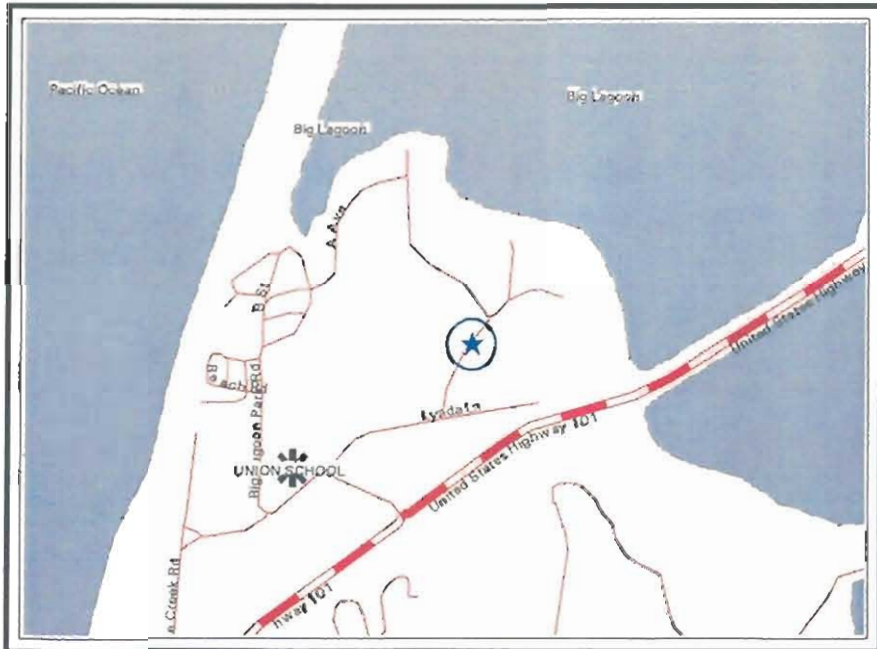
U.S. Army Corps of Engineers
Sacramento District



1:250,000



1:82,500



1:24,000

Public FUDS GIS Property Location Check Sheet

To: GERALD VINCENT

J09CA0064

BIG LAGOON INDIAN RESERV

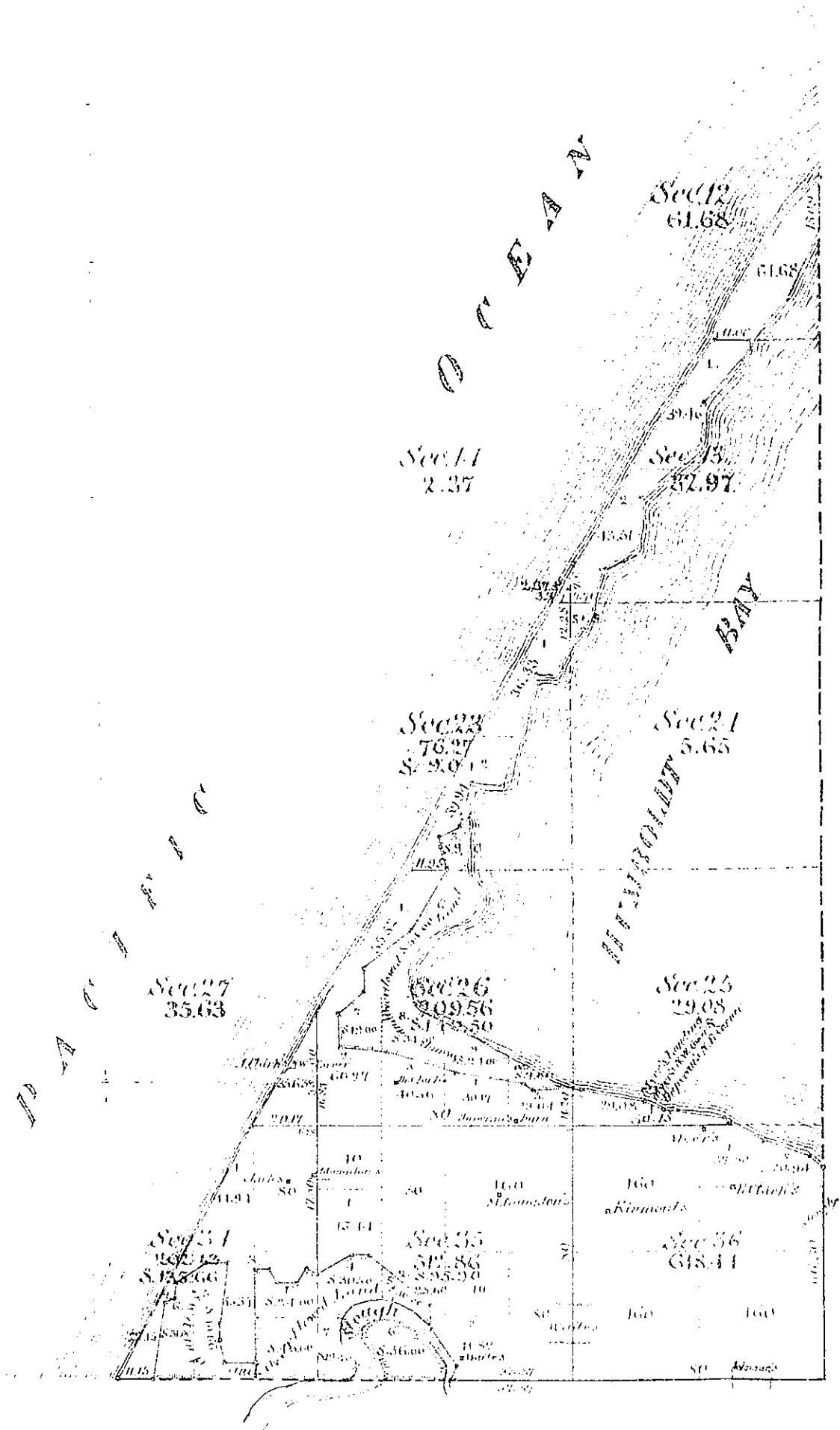
Latitude 41° 9' 40" N

Longitude 124° 7' 25" W

Location of FUDS property accurate

Updated Property Coordinates have been entered into FUDSMIS

Fractional Township N^o 4 North, Range N^o 2 West, Humboldt Meridian.



Aggregate Area of Public Land	1,836.94 Acres.
Swamp & Overflowed Land	381.06
Humboldt Bay & Navigable Slough	2,060.00
Aggregate	4,278.00

Note: The segregation of Swamp & Overflowed lands, made by the State of California in this Township prior to July 23rd 1866, is shown by shaded boundaries.

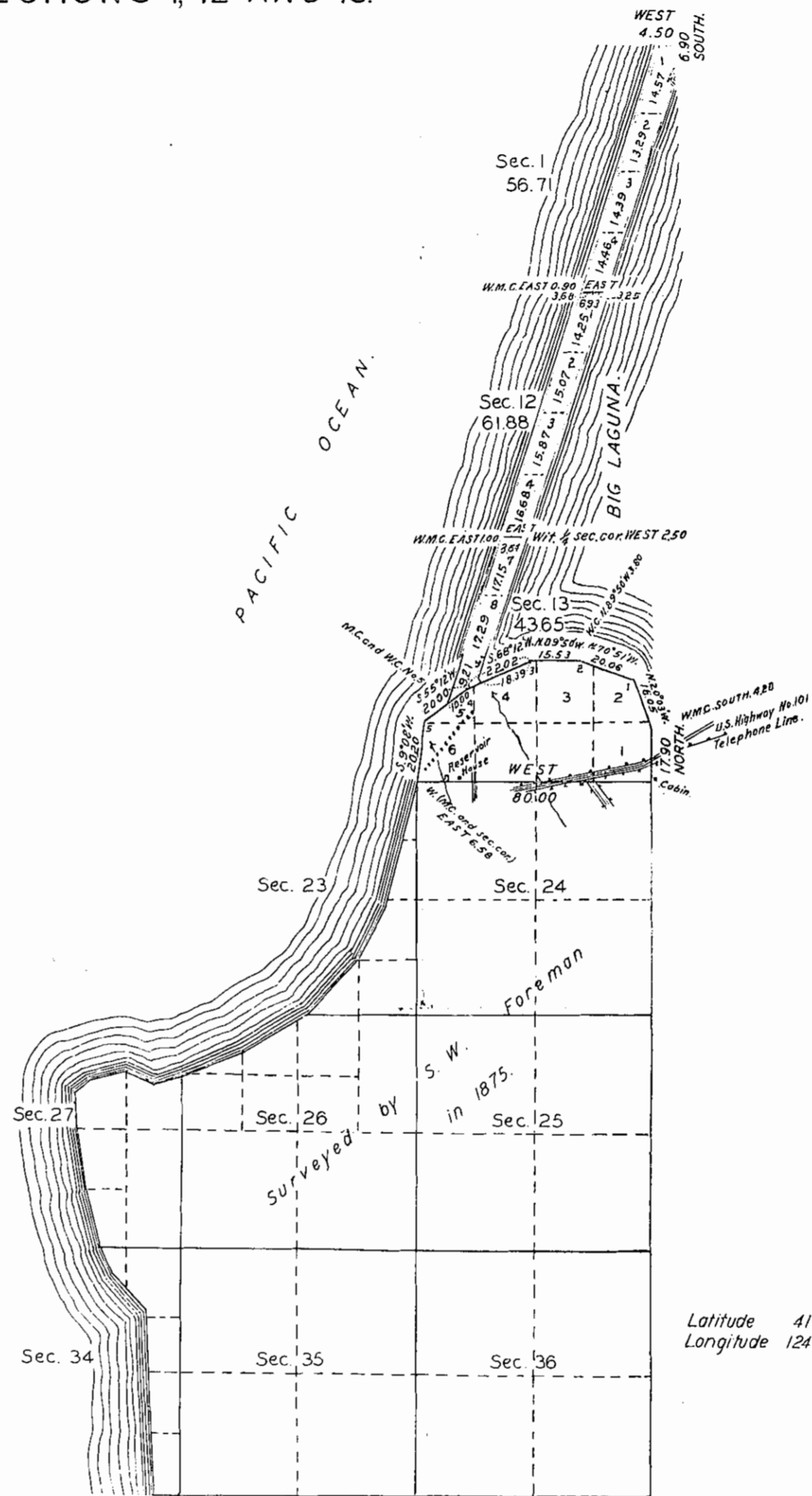
The above Map of Fractional Township N^o 4 North of Range N^o 2 West, of Humboldt Meridian represents the Amendments made to the Map of this Township as of March 15, 1885, in strict conformity with the instructions of the General Land Office dated December 12, 1884, and the segregation of swamp & overflowed lands made by the State of California prior to July 23rd 1866, which segregation conforms to the system of surveys adopted by the United States.

U.S. Surveyor General's Office,
San Francisco, California,
October 22, 1890

J. M. Pitt
U.S. Survey Gen. Cal.

TOWNSHIP N° 9 NORTH, RANGE N° 1 WEST, HUMBOLDT MERIDIAN, CALIFORNIA.

EXTENSION SURVEY IN SECTIONS 1, 12 AND 13.



This plat represents the survey of a strip of land in Secs 1, 12 and 13, which was not included in the original survey. The position of the original record-meander courses of Big Laguna and the Pacific Ocean in Sec. 13, which is shown by an irregular line with numbered angle points, does not represent a fixed boundary except as to a portion in front of lots 4 and 5. The directions and lengths of the several courses of this line have been adjusted to the record of the original survey.

Scale: 40 Chains to an Inch. Area Surveyed 162.24 Acres.

LINES DESIGNATED	BY WHOM SURVEYED	GROUP		MILEAGE		WHEN SURVEYED	
		N°	DATE	MLS.	CHS.	BEGUN	COMPLETED
Exterior	Julius Kellersberger						
Subdn. & meander	S.W. Foreman						
Exterior	Roger F. Wilson	278	May 6. 1932	0	29.30	Aug. 19. 1932	Sept. 3. 1932
Subdivisional	"	"	"	1	15.47	"	"
Meander	"	"	"	6	75.03	"	"

O.B.T.

Office of U.S. Supervisor of Surveys
 Denver, Colorado, April 17, 1933.
 The above plat of fractional Township No 9 North,
 Range No. 1 West, of the Humboldt Meridian, California,
 is strictly conformable to the field notes of the survey
 thereof which have been examined and approved.

Wm. H. Johnson
 U.S. Supervisor of Surveys.

DEPARTMENT OF THE INTERIOR
 GENERAL LAND OFFICE
 Washington, D.C., November 24, 1933.
 The survey represented by this plat
 having been correctly executed in accordance
 with the requirements of law and the regulations
 of this office, is hereby accepted.

Rutvenette Frank
 Assistant Commissioner.

Latitude 41° 12' N.
 Longitude 124° 06' W. At N.E. Cor. of Tp.

170